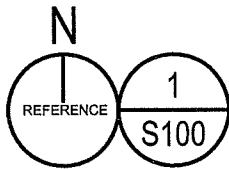
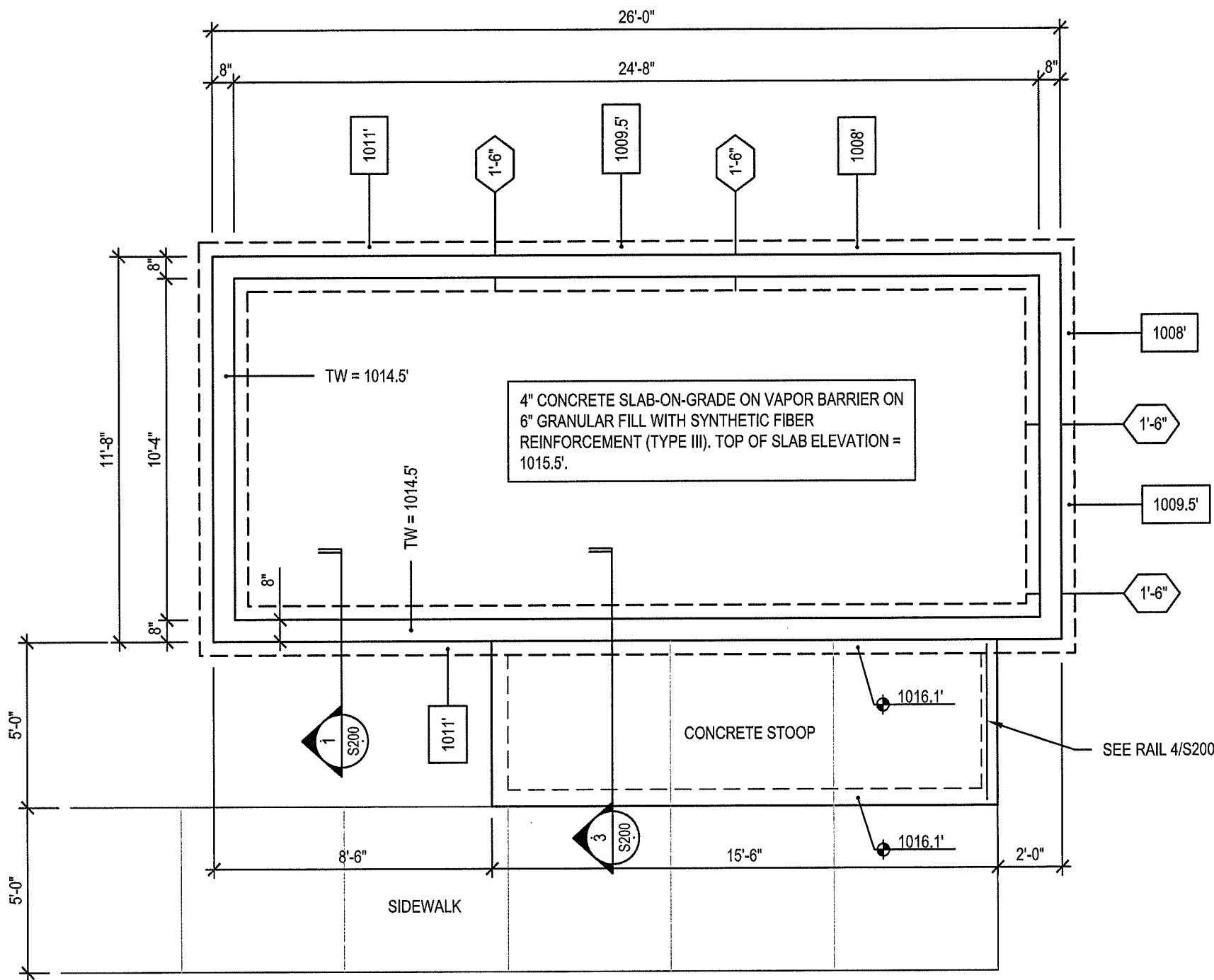


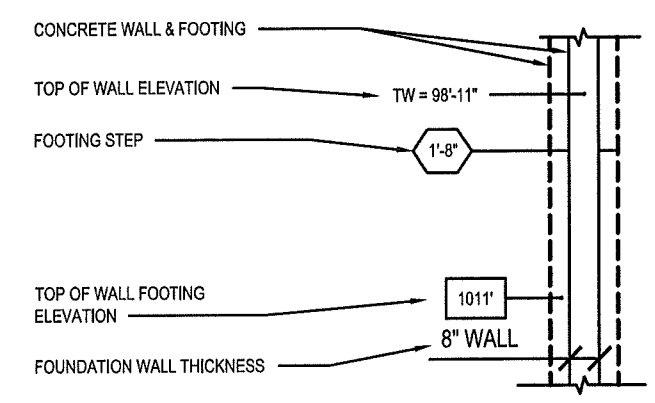
File: L:\2016\167358\Structural\Drawings\City of Madison - Foundation for Motorola Building.dwg Layout: S100 User: along Plotted: Jul 11, 2016 - 3:05pm Xref:z



COMMUNICATION BUILDING FOUNDATION PLAN

1/4" = 1'-0"

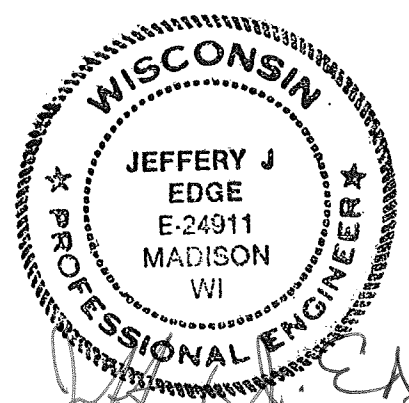
FOUNDATION LEGEND



FOUNDATION PLAN NOTES

CONCRETE INFORMATION
 MOTOROLA MSB SHELTER FOUNDATION
 CONCRETE 28 DAY STRENGTH..... f_c = 3000 PSI
 WATER/CEMENT RATIO..... w/c = 0.50
 MAXIMUM AGGREGATE SIZE..... = 0.75"
 AIR ENTRAINMENT.....NA

CONCRETE STOOP
 CONCRETE 28 DAY STRENGTH..... f_c = 4000 PSI
 WATER/CEMENT RATIO..... w/c = 0.40
 MAXIMUM AGGREGATE SIZE..... = 0.75"
 AIR ENTRAINMENT.....6%
 BROOM FINISH STOOP SLAB PER CITY OF MADISON SIDEWALK REQUIREMENTS



Jeffery J. Edge
 July 14, 2016
 S100, S200

"BUILDING RELATIONSHIPS WITH A COMMITMENT TO CLIENT SATISFACTION THROUGH TRUST, QUALITY AND EXPERIENCE"

- CIVIL ENGINEERING
- SURVEYING & MAPPING
- CONSTRUCTION SERVICES
- WATER RESOURCES
- PLANNING & DEVELOPMENT
- TRANSPORTATION ENGINEERING
- STRUCTURAL ENGINEERING
- LANDSCAPE ARCHITECTURE

MADISON REGIONAL OFFICE
 161 HORIZON DRIVE, SUITE 101
 VERONA, WISCONSIN 53593
 608.848.6060 PHONE | 608.848.2255 FAX
 MADISON | MILWAUKEE
 KENOSHA | APPLETON | WAUSAU
 www.jsdinc.com

SERVICES PROVIDED TO:
CITY OF MADISON

3514/3518 CROSS HILL DRIVE

PROJECT:
COMMUNICATION BUILDING FOUNDATION

PROJECT LOCATION:
 CITY OF MADISON
 DANE COUNTY, WI
 JSD PROJECT NO.: 16-7358

SEAL/SIGNATURE:

ALTHOUGH EVERY EFFORT HAS BEEN MADE IN PREPARING THESE PLANS AND CHECKING THEM FOR ACCURACY, THE CONTRACTOR AND SUBCONTRACTORS MUST CHECK ALL DETAIL AND DIMENSIONS OF THEIR TRADE AND BE RESPONSIBLE FOR THE SAME.

DESIGN: JJE
 DRAWN: AJL
 APPROVED: JJE

PLAN MODIFICATIONS:	DATE:

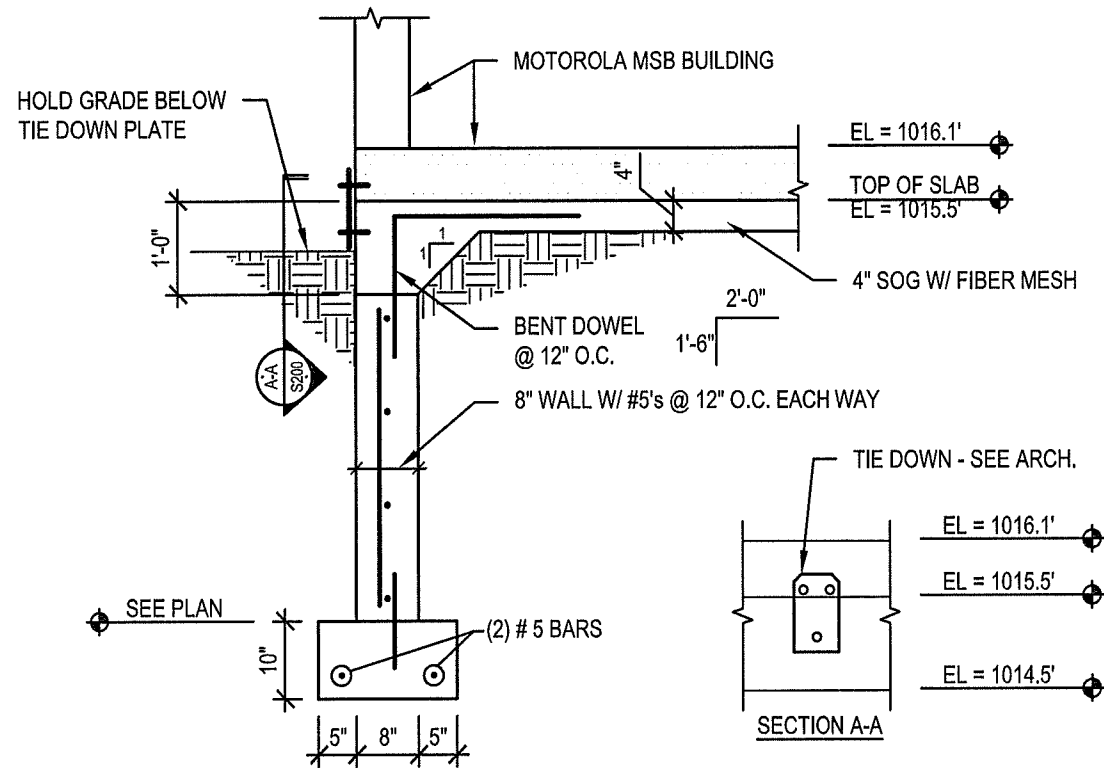


Toll Free (800) 242-8511
 Milwaukee Area (414) 259-1181
 Hearing Impaired TDD (800) 542-2289
 www.DiggersHotline.com

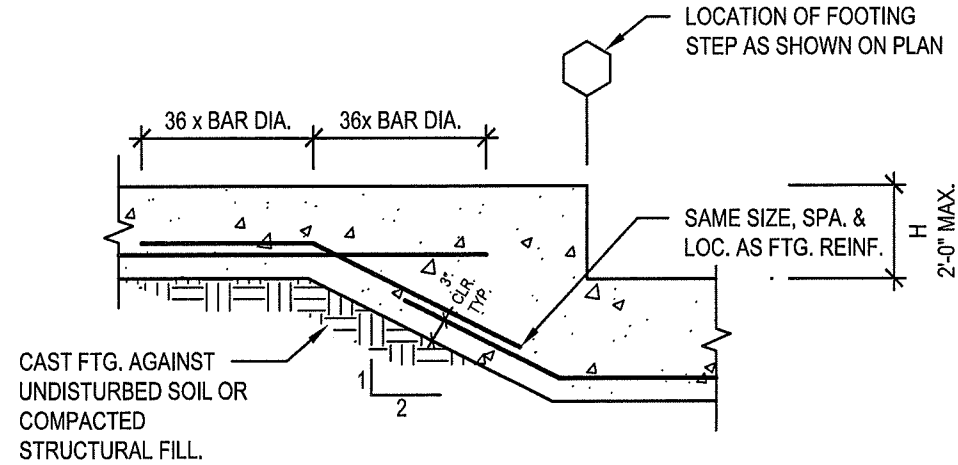
SHEET TITLE:
FOUNDATION PLAN

SHEET NUMBER:
S100

THESE PLANS AND DESIGNS ARE COPYRIGHT PROTECTED AND MAY NOT BE USED IN WHOLE OR IN PART WITHOUT THE WRITTEN CONSENT OF JSD PROFESSIONAL SERVICES, INC.

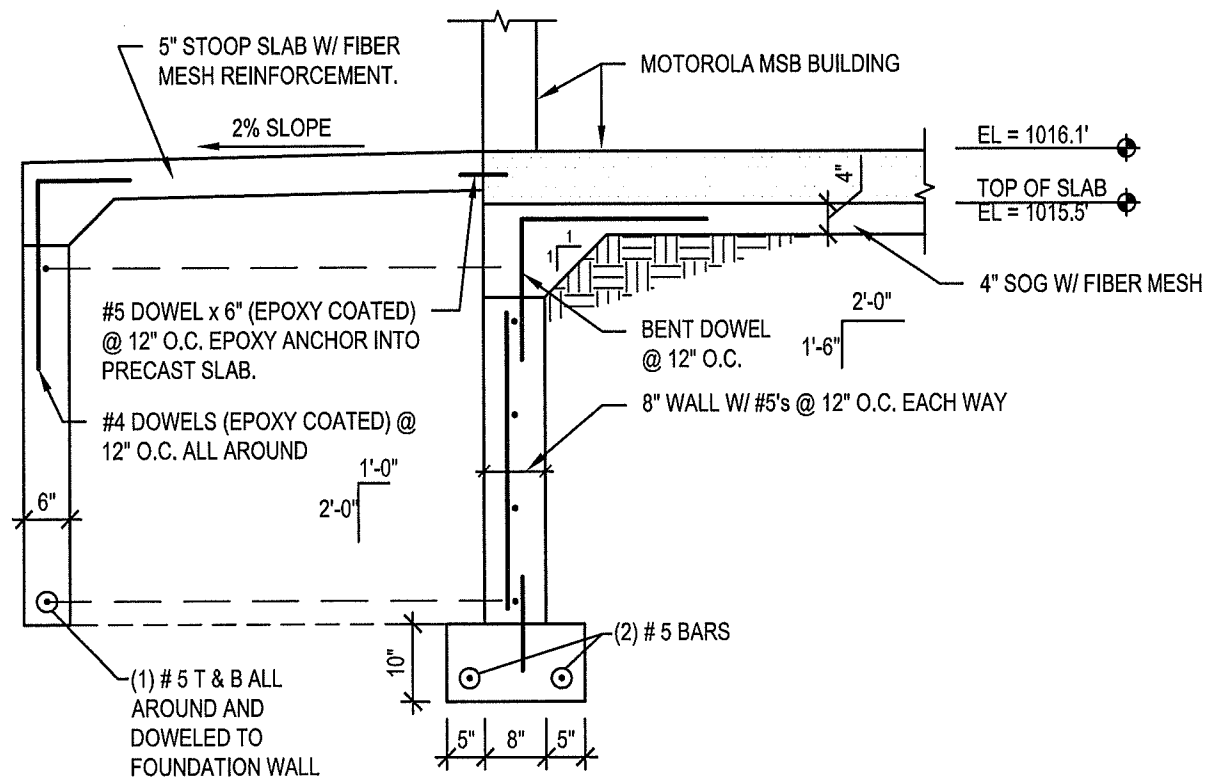


1 CROSS-SECTION OF FOUNDATION WALL
S200 1/2" = 1'-0"



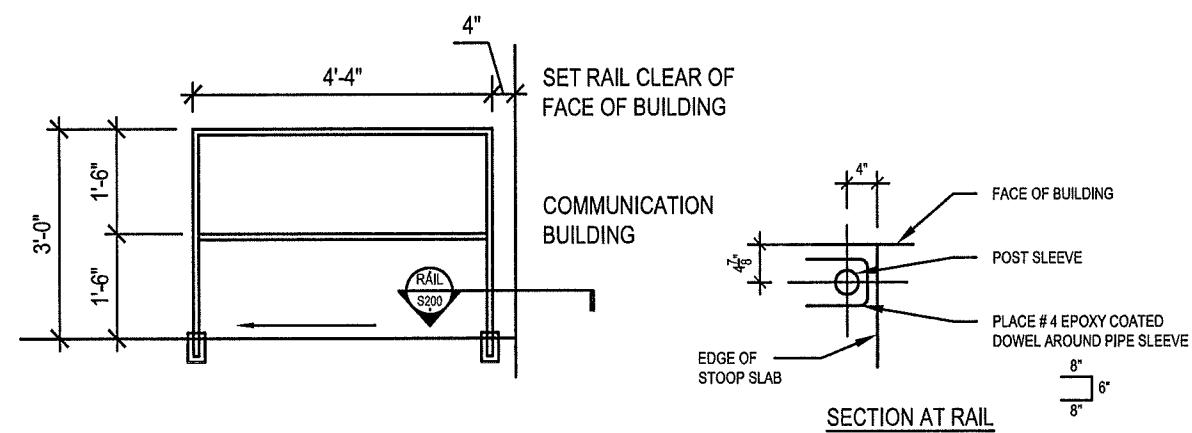
2 SINGLE STEP FOOTING DETAIL
S200 1/2" = 1'-0"

FOOTING STEP NOTES:
 1. SEE PLAN FOR FOOTING STEP DIMENSIONS.
 2. STEPPED FOOTING TO BE POURED MONOLITHICALLY.
 3. H ≤ 2'-0" UNLESS NOTED OTHERWISE.



3 CONCRETE STOOP DETAIL
S200 1/2" = 1'-0"

1 1/4" SSP RAIL SET IN 2 1/2" OUTSIDE DIAMETER x 5", STAINLESS STEEL SLEEVE. SET SLEEVE SUCH THAT TOP OF SLEEVE IS 1" ABOVE TOP OF STOOP. CAP BOTTOM OF SLEEVE. PROVIDE 1/2" DIAMETER HOLE IN CAP FOR WATER DRAINAGE. FILL AREA BETWEEN POST AND SLEEVE WITH NON-SHRINK NON-METALIC GROUT.



4 RAIL DETAIL
S200 3/8" = 1'-0"

JSD Professional Services, Inc.
 • Engineers • Surveyors • Planners

"BUILDING RELATIONSHIPS WITH A COMMITMENT TO CLIENT SATISFACTION THROUGH TRUST, QUALITY AND EXPERIENCE"

- CIVIL ENGINEERING
- SURVEYING & MAPPING
- CONSTRUCTION SERVICES
- WATER RESOURCES
- PLANNING & DEVELOPMENT
- TRANSPORTATION ENGINEERING
- STRUCTURAL ENGINEERING
- LANDSCAPE ARCHITECTURE

MADISON REGIONAL OFFICE
 161 HORIZON DRIVE, SUITE 101
 VERONA, WISCONSIN 53593
 608.848.5060 PHONE | 608.848.2255 FAX
 MADISON | MILWAUKEE
 KENOSHA | APPLETON | WAUSAU
 www.jsdinc.com

SERVICES PROVIDED TO:
CITY OF MADISON

3514/3518 CROSS HILL DRIVE

PROJECT:
COMMUNICATION BUILDING FOUNDATION

PROJECT LOCATION:
 CITY OF MADISON
 DANE COUNTY, WI
 JSD PROJECT NO.: 16-7358

SEAL/SIGNATURE:

ALTHOUGH EVERY EFFORT HAS BEEN MADE IN PREPARING THESE PLANS AND CHECKING THEM FOR ACCURACY, THE CONTRACTOR AND SUBCONTRACTORS MUST CHECK ALL DETAIL AND DIMENSIONS OF THEIR TRADE AND BE RESPONSIBLE FOR THE SAME.

DESIGN: JJE
 DRAWN: AJL
 APPROVED: JJE

PLAN MODIFICATIONS:	DATE:

DIGGERS HOTLINE
 Toll Free (800) 242-8511
 Milwaukee Area (414) 259-1181
 Hearing Impaired TDD (800) 542-2289
 www.DiggerHotline.com

SHEET TITLE:
FOUNDATION DETAILS

SHEET NUMBER:
S200

File: L:\2016\167358\Structural\Drawings\City of Madison - Foundation for Motorola Building.dwg Layout: S200 User: aling Plotted: Jul 11, 2016 - 3:07pm Xref's:

THESE PLANS AND DESIGNS ARE COPYRIGHT PROTECTED AND MAY NOT BE USED IN WHOLE OR IN PART WITHOUT THE WRITTEN CONSENT OF JSD PROFESSIONAL SERVICES, INC.